



SOUND VISION CO., LTD.

9 Chaiyaphruek Rd., Taling Chan, Taling Chan,
Bangkok 10170 Thailand

Support: 02-433-9988 Email: info@soundvision.co.th
www.soundvision.co.th



www.soundvision.co.th



TLA Series True Line Array



Active line array speaker system

TLA Series Active line array speaker system

A Wonderful Integration of Art and Technology Create a New Model for Intelligent Active line array speaker system.

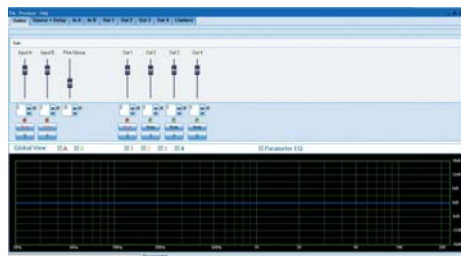
Sound System not only provides high-quality sound, but also needs to more attractively integrate the business environment and more easily to combine speaker system.



TLA Series Active line array speaker system



Slim Cabinet The width of TLA-208 line array speaker is just 63mm. No matter how you install it, it can be hidden in any architecture. It seems like that you sound the music but you can't find the speaker.

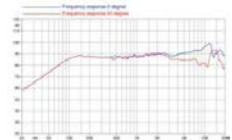


Powerful and Functional

The SUB Series has built in three way class-D amplifier module and the power is up to 1800W. It not only provides stable high-power output, but also can be extended to be a bigger audio system. For features, it has built-in powerful DSP processor chip and is equipped with special control software. There are different selections for wireless or wired audio input, which can meet the needs of different application.



HiFi Sound The TLA Series adopts European top drivers. We insist on transmitting HI-FI sound to line array speaker and make our clients enjoy the wonderful sound.



Flexible Combination
We design a special standing pole with cable inside.



TLA Series Active line array speaker system



Bluetooth

We provide two common wireless transmit modes to our clients, one is built-in Bluetooth module and the second is external 2.4G wireless audio transmitter and receiver. So the user could conveniently connect the TLA Series products by wireless mode.



Connection

2x MIC Input / one STEREO Line input
2x RCA input
One BLUETOOTH



Fast High / Low Volume Control

There are two volume control knobs for full-range and subwoofer. You could adjust the volume according to your need.



High-Efficiency heat dissipation System

Combining with the cabinet design, the internal fan and aluminum back panel form a high-efficiency cooling system when the woofer is working, so it effectively guarantees the stability of the amplifier module.



Preset

There 20 sets of preset optimization programs for you to choose.



DSP Processing

There is a built-in 2-input and 3-output DSP audio processing module, which is with the functions of adjustment, crossover, Phase, delay, equalization, high/low filter and limit.



Bass Boost Button

If you want more powerful bass, you could push the "BASS BOOST" button to improve the bass effect.



SPEAKON Connection

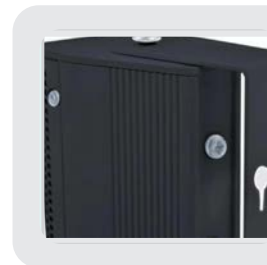
We choose high-quality SPEAKON and POWERCON connector to guarantee the durability.



TLA Series Active line array speaker system



TLA Series (True Line Array) line array speaker system looks slim and it has different kinds of installation methods. No matter which installation method you use, it can be well integrated into a variety of buildings.



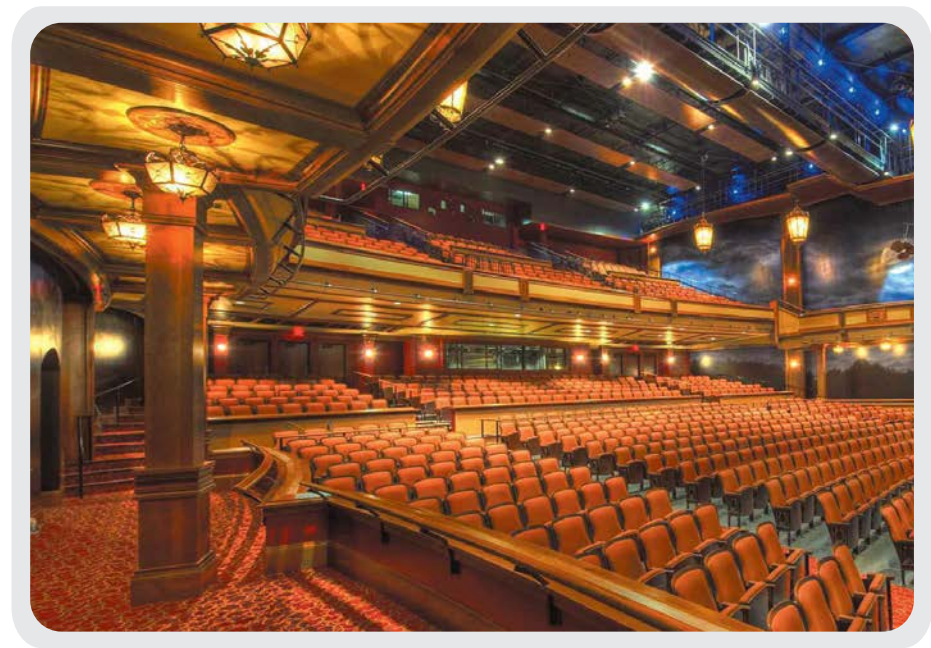
U-Shape Installation Rack



Angle Adjustment Installation Rack

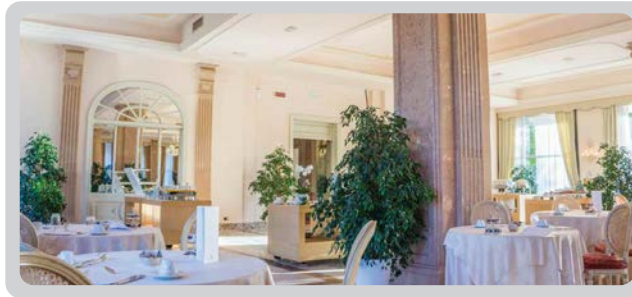


SPEAKON Connector and PHOENIX Connector





Music concert



Background Music



meeting



There are optional covers for you to choose according to your need. With the optional accessories, you can easily put the system into your car. Music flies with your car



Wherever you go you just need to bring it then you can enjoy a music party with your friends and colleagues.

The MP-35-60 is unlike any other speaker poles. It enables simple, speedy setup for small configurations. Freely adjustable, it forwards the signal to the top-mounted speaker via the internal connection no other speaker cable necessary. There is a bracket on the bottom and side of the active subwoofer, so you could connect with the top mounted speaker in horizontal or vertical placement; or you could use two SPEAKON output connectors on the amplifier module to connect the Active line array speaker system.

MP-35-60
(Long Standing with Cable Connection Inside)



MP-35-10
(Short Connector with Cable Connection Inside)



TLA Series Active line array speaker system



Real Linear System

Integration Design

Flexible Combination

Compact and Convenient

Creative Connection without Cables

TLA Series (True Line Array) Active line array speaker system As the theory goes, neighboring speakers form a common beam specialists call this a coherent wave front. This creates a single, consistent line source that delivers purer sound with far greater efficiency. You can cover a much larger area with far better sound using less power.TLA Series adopts 2" and 3" driver with excellent frequency response. You can combine up these units to suit the given purpose and audience size. The mid/high units were designed specifically to port your music far into the audience for everyone to enjoy uncolored, crisp and highly defined audio images. Equipped with particular quantities and offering dynamic range,they deliver signals with a silky-smooth sound.



Typical Combinations :



meeting

TLA-208 x 2
TLA-12S x 2



Background Music

TLA-306 x 2
TLA-12S x 2



Portable Performance

TLA-312x 2
TLA-15S x 4

Optional Accessories :

MP-35-60
(Long Standing with Cable Connection Inside)

MP-35-10
(Short Connector with Cable Connection Inside)



TM-1
(Wall-Mount Rack)

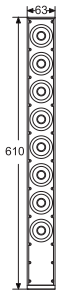
TLA-200Series Line Array Column Speaker



Features:

- 2" high quality and sound pressure transducers.
- Solid and excellent mid range frequency response.
- Elegant aesthetic design for the most demanding installations.
- Plug and play smart Jack connector.
- Phoenix and Speakon Input for both portable and installation Applications.
- Supports multiple entertain for Dinner party, Hotel ball room, Bar, Shopping mall, Portable sound reinforcement.
- Applied to use with the Subwoofer TLA-12S

Model	TLA-208
Transducer	8 x 2" (50 mm) neodymium driver
Frequency Respos	160Hz - 18kHz
Rated Power	120W
Sensitivity	92dB
Maximum SPL	118dB
Nominal Impedance	8Ω
Dispersion Angle	100° x 15°
Connection	1 x PHOENIX connector, 2 x 6.3 jack
Dimensions (W x H x D)	63 x 610 x 82 mm
Net Weight	2.6 kg



TLA-208

Optional Accessories :

MP-35-60
(Long Standing with Cable Connection Inside 600mm)



MP-35-10
(Short Connector with Cable Connection Inside 100mm)



UB-TLA-208 U-Shape Rack
Suitable for TLA-208



TM-1
(Wall-Mount Rack)

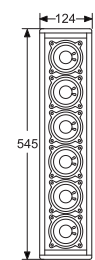
TLA-300Series Line Array Column Speaker



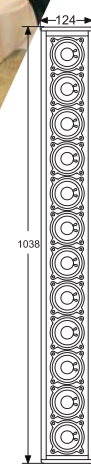
Features:

- Italian made 3" high quality and sound pressure transducers.
- Solid and excellent mid range frequency response.
- Elegant aesthetic design for the most demanding installations.
- Plug and play smart Jack connector.
- Phoenix and Speakon Input for both portable and installation Applications.
- Supports multiple entertain for Dinner party, Hotel ball room, Bar, Shopping mall, Portable sound reinforcement.
- Applied to use with the Subwoofer TLA-12S / TLA-15S

Model	TLA-306	TLA-312
Transducer	6 x 3" (75 mm) ferrite driver	12 x 3" (75 mm) ferrite driver
Frequency Respos	130Hz-20kHz	120Hz-18kHz
Rated Power	120W	240W
Sensitivity	95dB	97dB
Maximum SPL	123dB	127dB
Nominal Impedance	12Ω	6Ω
Dispersion Angle	100° x 20°	100° x 15°
Connection	2 x PHOENIX , 2 x Speakon connector	2 x PHOENIX , 2 x Speakon connector
Dimensions (W x H x D)	124 x 545 x 152 mm	124 x 1038 x 152 mm
Net Weight	6.6 kg	12 kg



TLA-306



TLA-312

Optional Accessories :

MP-35-60
(Long Standing with Cable Connection Inside 600mm)



MP-35-10
(Short Connector with Cable Connection Inside 100mm)



TM-1
(Wall-Mount Rack)

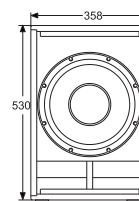
TLA-SUB Series Active Subwoofer Speaker



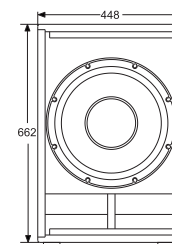
Features:

- 12",15" high quality and sound pressure transducers.
- Solid and excellent Low frequency response.
- Elegant aesthetic design for the most demanding installations.
- Plug and play smart Jack connector.
- Stereo balanced XLR and Unbalanced RCA Input two Speakon output for Column speaker portable.
- Separated Full range and Bass Volume control.
- Bluetooth connected music playback Applications.
- Supports multiple entertain for Dinner party, Hotel ball room, Bar, Shopping mall, Portable sound reinforcement.
- Together used with TLA-208, TLA-306, TLA-312.

Model	TLA-12S	TLA-15S
Transducer	1 x 12" (300 mm) ferrite woofer	1 x 15" (385 mm) ferrite woofer
Frequency Response	45Hz-180Hz	40Hz-150Hz
Rated Power	350W	500W
Sensitivity	95dB	96dB
Maximum SPL	124dB	129dB
Nominal Impedance	8Ω	8Ω
Power Output	LF: 600W + HF: 2 x 300W (8Ω)	LF: 1000W + HF: 2 x 400W (8Ω)
DSP Connection	2 x MIC/Line + 2 x RCA + 1 x Bluetooth input, 2 x Speakon output	2 x MIC/Line + 2 x RCA + 1 x Bluetooth input, 2 x Speakon output
Dimensions (W x H x D)	358 x 530 x 485 mm	448 x 662 x 555 mm
Net Weight	27.9 kg	40.9 kg



TLA-12S



TLA-15S

Optional Accessories :

MP-35-60
(Long Standing with Cable Connection Inside 600mm)



MP-35-10
(Short Connector with Cable Connection Inside 100mm)

TLA Series Active line array speaker system

Optional Accessories :



MP-35-60
(Long Standing with Cable
Connection Inside 600mm)



MP-35-10
(Short Connector with Cable
Connection Inside 100mm)



TM-1 Wall-Mount Rack
Suitable for All Column
Speakers



UB-TLA-208 U-Shape Rack
Suitable for TLA-208



Speaker Connector
Rigging for TLA-312



CBAG-208 Bag Suitable
for TLA-208 / 2 pcs
in one bag



CBAG-306 Bag Suitable
for TLA-306



CBAG-312 Bag Suitable
for TLA-312



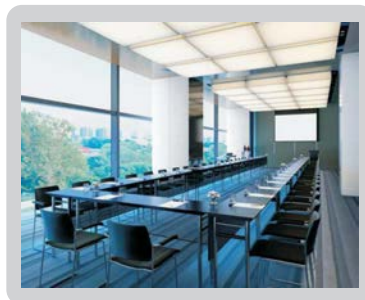
CBAG-12S Cover Suitable
for TLA-12S



CBAG-15S Cover Suitable
for TLA-15S



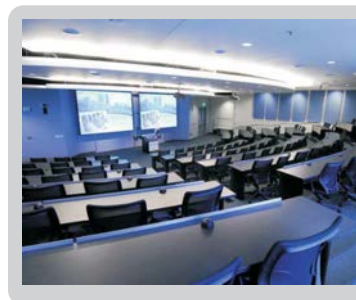
TLA Series Active line array speaker system



Small Sound Reinforcement System

TLA-208 x 2
TLA-12S x 1

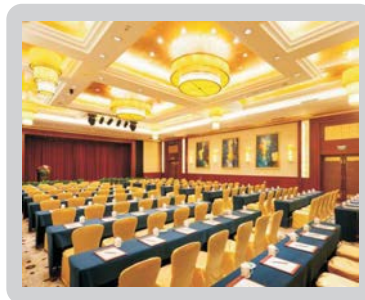
The whole system keeps great speech intelligibility. It is suitable for small meeting room, lobby, business arena within 100 square meters. Also, it is a good choice to use for sound reinforcement, multimedia and product presentation



Large Sound Reinforcement System

TLA-208 x 2
TLA-12S x 2

The height of TLA-208 makes it special suitable for long-distance application, even the audience in the last row can hear the voice very clearly. So it is suitable for auditorium and ladder classroom. And it is a good choice for large meeting room with 300 square meters.



Multi- Functional Sound Reinforcement System

TLA-306 x 4
TLA-12S x 4

The advantage of this system is wide range and adequate dynamic. It is suitable for multi-function hall and banquet hall more than 500 square meters.



Music Concert

TLA-312 x 2
TLA-15S x 2

This system will reproduce wonderful voice with high fidelity, It is suitable for music club and band performance



Small and Medium Performance

TLA-306 x 2
TLA-312 x 2
TLA-15S x 4

Active subwoofers combine to a strong low-frequency array. With the TLA-312 + TLA-306, the whole system will bring you a shocked performance effect. And it is special suitable for performance activities more than 300 people.



Private Party

TLA-306 x 4
TLA-15S x 2

This system will make you immerse in the music. It is suitable for small dancing party and wedding ceremony with 100 people





Training Room



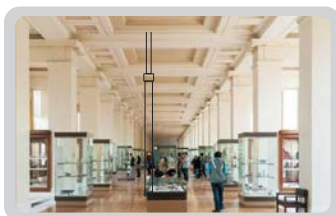
Conference Center



Bar



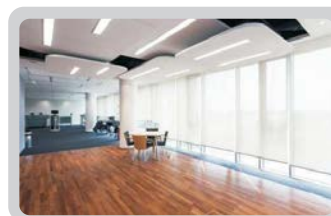
Wedding ceremony



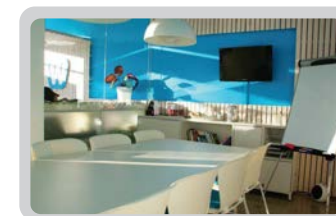
Cultural Exhibition



Yacht



Office



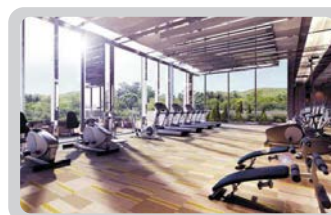
Class room



Hotel Banquet



Shopping Mall



Gymnasium



Entertain



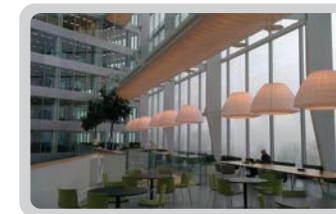
Transportation Junction



Amall Performance



Exhibition Center



Background Music