



ESiGO ESi1020

PROFESSIONAL ALL IN ONE PORTABLE SPEAKER



- DUAL UHF WIRELESS MICROPHONES.
- BUILT-IN 7 CHANNEL MIXER.
- POWER RATING 240W
- USB SUPPORT MP3, WMA FILES.
- WIRELESS AUDIO STREAMING BLUETOOTH.
- BI AMPLIFIER CLASS D
- BUILT-IN MIC EFFECT
- BATTERY FOR UP TO 12 HOURS.



ESiGO ESi1020

PROFESSIONAL ALL IN ONE PORTABLE SPEAKER

The SOUNDVISION ESiGO ESi1020 Portable PA system is a completely self-contained mobile sound system which is battery powered 2-way active speaker 10-inch low-frequency driver, 1-inch high-frequency driver Built-in rechargeable battery provides up to 12 hours of cordless sound Includes UHF wireless microphone (16*2 Channels) with automatic tuning (ACS) Bluetooth connection for wireless audio streaming Built-in USB (MP3/WMA) player for unattended playback Pole-mount socket,telescoping handle and transport wheels built in 2-band EQ and reverb effect Mic 1 combo & 2 inputs with Mic/Line level selector switch Audio 2 input stereo 1/4-inch & 3.5mm Aux input connector Built-in storage holds 2 microphones and accessories.



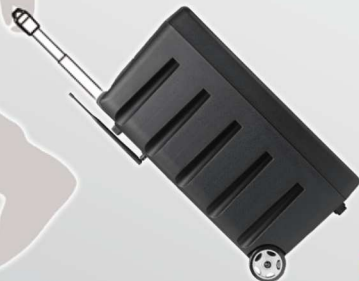
MULTIFUNCTION

STORAGE COMPARTMENT FOR ACCESSORIES



Built-in pole adaptor in the bottom

An ideal solution for mobile application equipped with two casters and a telescopic handle



FEATURE

ESiGO ESi1020 PROFESSIONAL ALL IN ONE PORTABLE SPEAKER

- 2-Way Active speaker system.
- 10" LF woofer and 1" HF compression driver.
- Frequency response: 55Hz – 20KHz.
- Power RMS: 120W / 240W (max)
- Built-in Class D Bi amplifier.
- Built-in : Media player
 - USB support MP3, WMA files.
 - Wireless audio streaming Bluetooth.
 - LCD screen display.
 - IR Remote control.
- Built-in : Wireless microphone receiver.
 - Frequency range: 803.2 ~ 805.8 MHz .
 - Dual UHF wireless receiver 32 switchable channels.
 - Dual Handheld microphone transmitters 32 switchable channels.
 - Large LCD screen display.
 - Auto synchronized (ASC).
- Built-in 7 channel mixer.
 - 1 CH Mic/line mono combo (XLR/TRS) input.
 - 2 CH Mic/line mono 1/4" TR inputs.
 - 1 CH Line stereo 2*1/4" TR input.
 - 1 CH Line stereo 3.5mm TRS Aux input.
 - 2 CH UHF Wireless microphones.
- Built-in 2 band EQ for master.
- Built-in line output: 1/4" TRS.
- Operating voltage AC: 100-240V DC: 24V (12V*2)
- Battery status indicator.
- Battery protection circuit.
- Thermal protection for amplifier.
- Light-Weight plastic enclosure made from impact-resistant polypropylene (PP)
- Pole mount recess for 35mm tripods.

ESI1020 SUPPORTS APPLICATIONS MULTIPLE

- Meeting / Conference Room.
- Training Rooms.
- Health clubs / Aerobics.



- Retail shops.
- Shopping malls & Plaza.
- Restaurant & Bar.



SPECIFICATION

ESiGO ESI 1020 PROFESSIONAL ALL IN ONE PORTABLE SPEAKER.

Audio	
Speaker type.	2 Way full-range active speaker
Drivers.	LF 10" woofer, HF 1" compression driver
Frequency response.	55Hz - 20KHz
Sensitivity 1w/1m	94dB
Power Output.	RMS: 120W / 240W(max)
Amplifier.	Bi-Amplifier CLASS-D
Protection.	Short circuit, over-current, overload protection
Operating voltage.	AC: 100-240V DC: 24V (12V*2)
Media Player.	
USB Port.	Supported file formats: MP3, WMA
Bluetooth Version.	Bluetooth 3.0
Bluetooth Range	10 Meter
Wireless microphone.	
Frequency range Group A	803.2 ~ 805.8 MHz
Frequency range Group B	803.2 ~ 805.8 MHz
Channel number.	32 Channels (16*2)
Receivers.	Dual UHF wireless receiver
Transmitters.	Dual Handheld microphone transmitters
Transmitter power.	10mw.
Distance Range.	20 - 50 Meter sing of line
Wireless Mic Power.	2 AA 1.5V batteries
Battery.	
Battery Type.	24V DC, 5Ah/20Hr lead acid batteries
Battery life.	Up to 12 Hours at half power 4 hours at max power.
Recharge Time.	Approximately 10 hours
General.	
Cabinet material.	polypropylene (PP)
Mounting Socket.	Standard 35 mm
Dimensions.	360 x 560 x 303 mm (W*H*D)
Weight.	17.5 kg

SOUND VISION CO., LTD.

9 Chaiyaphruek Rd., Taling Chan, Taling Chan,
Bangkok 10170 Thailand

Support: 02-433-9988 Email: info@soundvision.co.th
www.soundvision.co.th

